

Plasterboard concealed fixings fitting instructions

Handcrafted Shelves

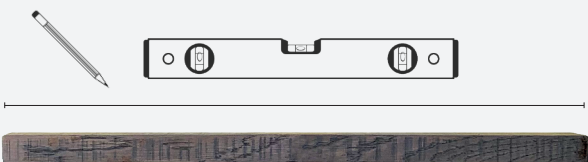
We have provided you with the ultimate floating shelf hardware solution for plasterboard walls. Your kit will contain strong and adjustable concealed floating shelf supports manufactured by Hafele, along with the innovative Gripit brown plasterboard fixing.

This fixing method can hold approximately 10kg per fixing when fixed to 15mm plasterboard walls. Fixing to 9mm plasterboard will decrease the load capacity.

You will need...

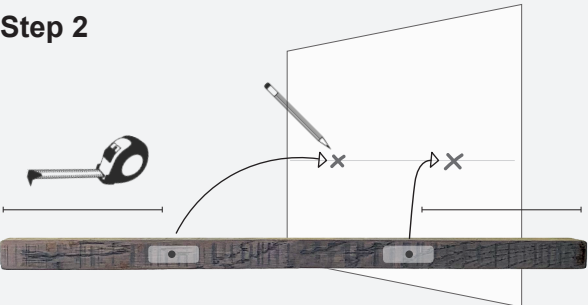


Step 1



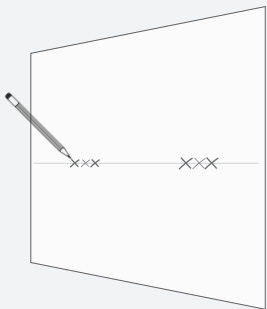
Using a spirit level, draw a line on your wall the same width as your shelf.

Step 2



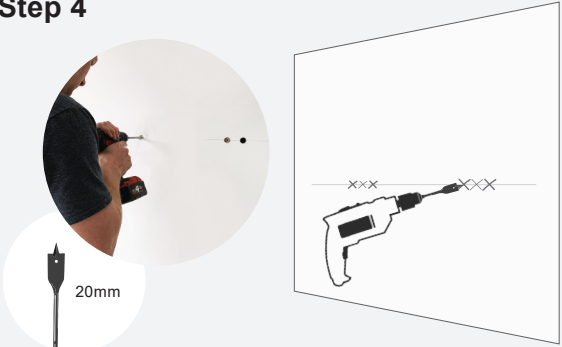
Measure from the end of the shelf to the hole centres and transfer these measurements onto your wall.

Step 3



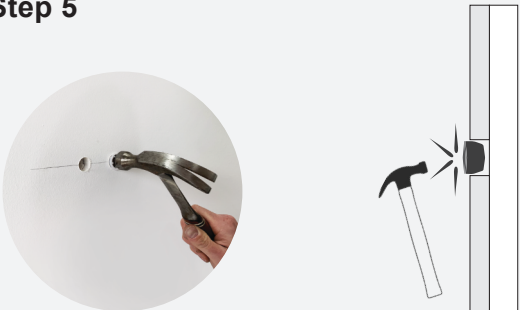
Hold the metal brackets against the markings on the wall and mark where the Gripit fixings need to go, making sure these are level all the way a long.

Step 4



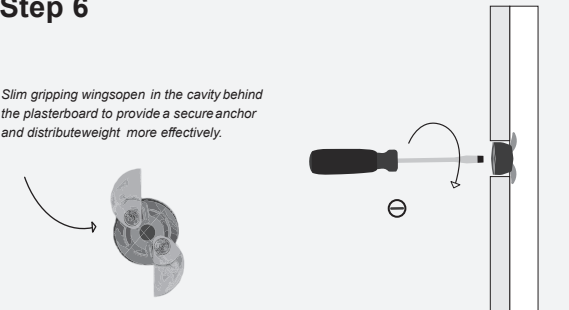
Using a 20mm spade bit, drill a hole on each of the outer marking to accommodate the Gripit fixings.

Step 5



Insert the Gripit fixing into the holes. Use a hammer to gently tap them flush with your wall.

Step 6



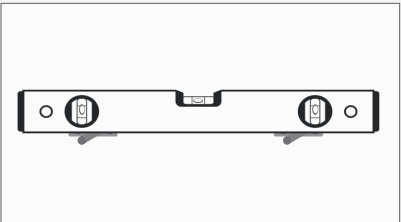
Use a flat head screwdriver to turn the cam and open the wings for super grip strength on every fixing.

Step 7



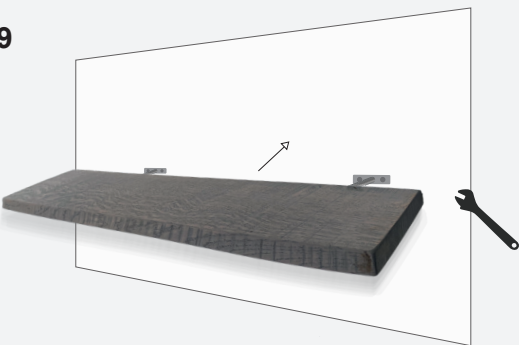
Place the concealed shelf supports over the fixings and screw lightly in place using the M6 bolts provided.

Step 8



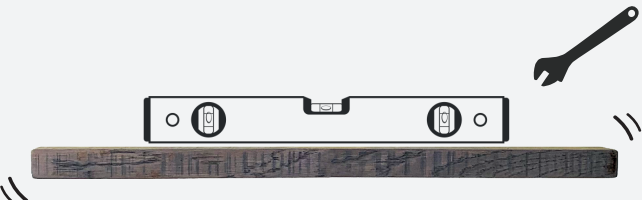
Use a spirit level to make sure the fixings are level before fully tightening.

Step 9



Slide the shelf 3/4 of the way onto the brackets so that you can still fit a spanner behind to make any adjustments.

Step 10



Check the shelf is level and adjust accordingly.

\* For additional precaution a small amount of silicone or grab adhesive can be applied in the fixing holes to prevent the shelf from becoming loose. Slide the shelf flush to your wall. As the holes are only 1mm wider than the brackets you'll find it's a tight fit.

