

Modern Oak Bracket Fitting Instructions

Fixings supplied with our modern oak bracket shelves. Suitable for solid walls.

YOU WILL NEED...



Tape Measure



Pencil



Hammer



Drill



8mm Drill Bit



Spirit Level

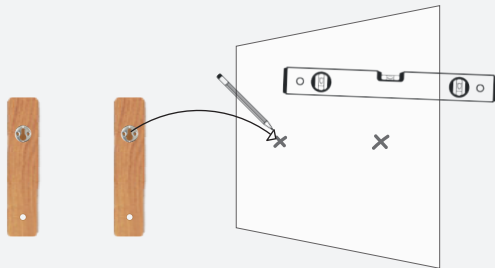


Flat Head Screwdriver



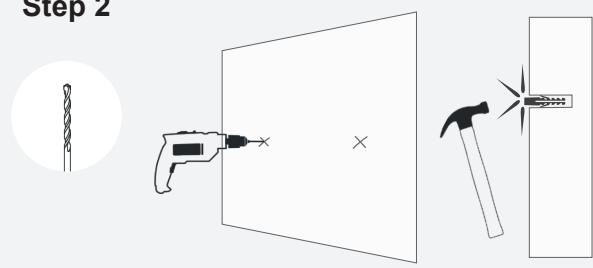
Phillips Head Screwdriver

Step 1



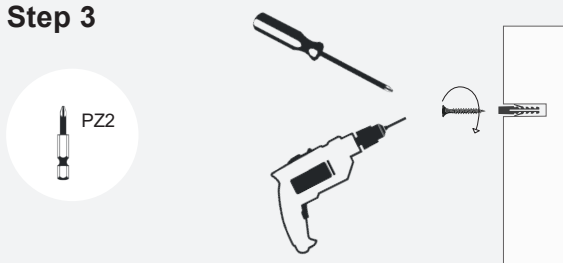
Mark out where you would like the keyhole fixings to attach to the wall making sure the markings are level with a spirit level.

Step 2



Drill the wall deep enough to accept the wall plugs. Insert the wall plugs into the 2 holes and use a hammer to tap the wall plugs flush with your wall.

Step 3



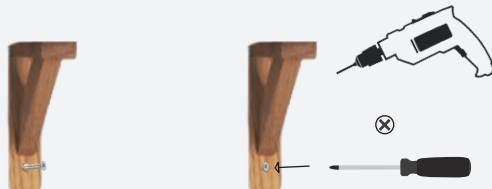
Use a PZ2 drill bit and drill or screwdriver to drive each screw into the wall plugs leaving them protruding approximately 1/4 of an inch.

Step 4



Place the brackets onto the screws. The screws may need adjusting slightly. Once in place, mark out on the wall where the lower screws need to be before removing the brackets from the wall.

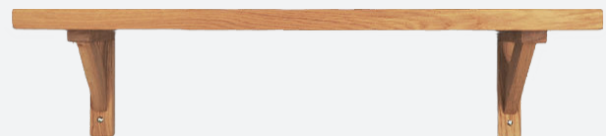
Step 5



Repeat step 2 for the lower fixings.

Once step 2 is repeated, place the brackets back onto the keyhole fixings then use a screwdriver or a drill with the PZ2 drill bit to screw the bottom screws into position.

Step 6



Place the shelf on top of the brackets. For additional precaution a small amount of silicone or grab adhesive can be applied on top of the fixings to secure the shelves in place.